

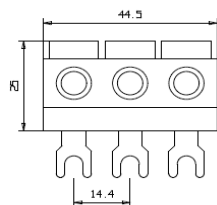
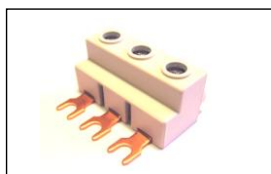


Zubehör

Accessories

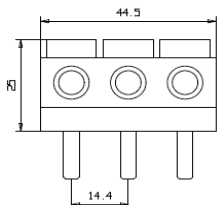
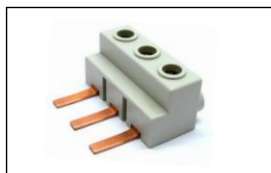
Accessoires

Zubehör für Motorschutzschalter



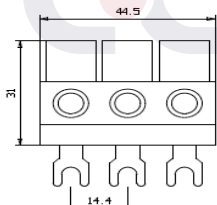
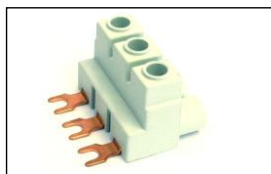
Einspeiseblock für Motorschutzschalter, Gabel

| Artikel-Nr. Art.-no N° article | Farbe Colour Couleur | GTIN-Code 4046931... | (Anschluss) Querschnitt (Connecting)Cross section Coupe transversale | Phasen Phase Phase | VPE Pack. Emballage | Cu/CuZn Zahl Cu/CuZn Code Cu/CuZn Codé |
|--------------------------------------|----------------------------|-------------------------|--|--------------------------|---------------------------|--|
| | | [GTIN-13] | [Cu / mm ²] | [1...4] | [Unit] | [kg] |
| 01.116.100 | | 023929 | 3 x 25 | 3 | 10 | 0,025 |



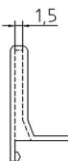
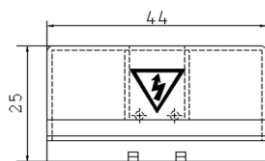
Einspeiseblock für Motorschutzschalter, Stift

| Artikel-Nr. Art.-no N° article | Farbe Colour Couleur | GTIN-Code 4046931... | (Anschluss) Querschnitt (Connecting)Cross section Coupe transversale | Phasen Phase Phase | VPE Pack. Emballage | Cu/CuZn Zahl Cu/CuZn Code Cu/CuZn Codé |
|--------------------------------------|----------------------------|-------------------------|--|--------------------------|---------------------------|--|
| | | [GTIN-13] | [Cu / mm ²] | [1...4] | [Unit] | [kg] |
| 02.116.100 | | 023936 | 3 x 25 | 3 | 10 | 0,025 |

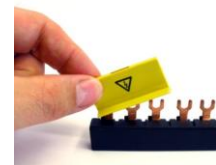


Einspeiseblock für Motorschutzschalter nach UL 508

| Artikel-Nr. Art.-no N° article | Farbe Colour Couleur | GTIN-Code 4046931... | (Anschluss) Querschnitt (Connecting)Cross section Coupe transversale | Phasen Phase Phase | VPE Pack. Emballage | Cu/CuZn Zahl Cu/CuZn Code Cu/CuZn Codé |
|--------------------------------------|----------------------------|-------------------------|--|--------------------------|---------------------------|--|
| | | [GTIN-13] | [Cu / mm ²] | [1...4] | [Unit] | [kg] |
| 01.115.100 | | 023943 | 3 x 25 | 3 | 10 | 0,025 |



Berührungsschutzkappe für Drehstromschienenblöcke



| Artikel-Nr. Art.-no N° article | Farbe Colour Couleur | GTIN-Code 4046931... | (Anschluss) Querschnitt (Connecting)Cross section Coupe transversale | Phasen Phase Phase | VPE Pack. Emballage | Cu/CuZn Zahl Cu/CuZn Code Cu/CuZn Codé |
|--------------------------------------|----------------------------|-------------------------|--|--------------------------|---------------------------|--|
| | | [GTIN-13] | [Cu / mm ²] | [1...4] | [Unit] | [kg] |
| 01.001.401 | | 023950 | --- | 3 | 10 | --- |

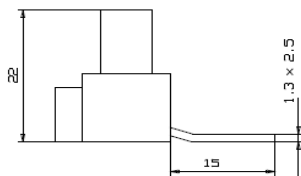


Zubehör

Accessories

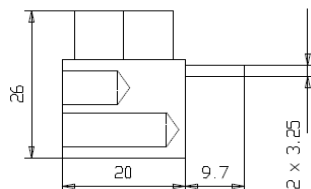
Accessoires

Einspeiseklemmen für Phasenschienen



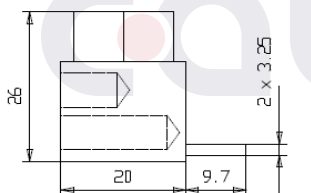
Einspeiseklemme 10mm², Stift

| Artikel-Nr. Art.-no N° article | Farbe Colour Couleur | GTIN-Code 4046931... | (Anschluss) Querschnitt (Connecting)Cross section Coupe transversale | Phasen Phase Phase | VPE Pack. Emballage | Cu/CuZn Zahl Cu/CuZn Code Cu/CuZn Codé |
|--------------------------------------|----------------------------|-------------------------|--|--------------------------|---------------------------|--|
| | | [GTIN-13] | [Cu / mm ²] | [1...4] | [Unit] | [kg] |
| 60.005.100 | | 220724 | 10 | 1 | 10 | 0,016 |



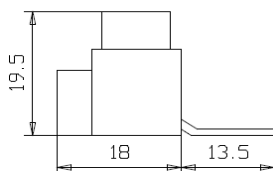
Einspeiseklemme 2 x 10mm², Stift

| Artikel-Nr. Art.-no N° article | Farbe Colour Couleur | GTIN-Code 4046931... | (Anschluss) Querschnitt (Connecting)Cross section Coupe transversale | Phasen Phase Phase | VPE Pack. Emballage | Cu/CuZn Zahl Cu/CuZn Code Cu/CuZn Codé |
|--------------------------------------|----------------------------|-------------------------|--|--------------------------|---------------------------|--|
| | | [GTIN-13] | [Cu / mm ²] | [1...4] | [Unit] | [kg] |
| 60.020.100 | | 220731 | 2 x 10 | 1 | 10 | 0,018 |



Einspeiseklemme 2 x 10mm², Stift

| Artikel-Nr. Art.-no N° article | Farbe Colour Couleur | GTIN-Code 4046931... | (Anschluss) Querschnitt (Connecting)Cross section Coupe transversale | Phasen Phase Phase | VPE Pack. Emballage | Cu/CuZn Zahl Cu/CuZn Code Cu/CuZn Codé |
|--------------------------------------|----------------------------|-------------------------|--|--------------------------|---------------------------|--|
| | | [GTIN-13] | [Cu / mm ²] | [1...4] | [Unit] | [kg] |
| 60.021.100 | | 220748 | 2 x 10 | 1 | 10 | 0,018 |



Einspeiseklemme 25mm², Stift

| Artikel-Nr. Art.-no N° article | Farbe Colour Couleur | GTIN-Code 4046931... | (Anschluss) Querschnitt (Connecting)Cross section Coupe transversale | Phasen Phase Phase | VPE Pack. Emballage | Cu/CuZn Zahl Cu/CuZn Code Cu/CuZn Codé |
|--------------------------------------|----------------------------|-------------------------|--|--------------------------|---------------------------|--|
| | | [GTIN-13] | [Cu / mm ²] | [1...4] | [Unit] | [kg] |
| 60.001.100 | | 220755 | 25 | 1 | 10 | 0,017 |

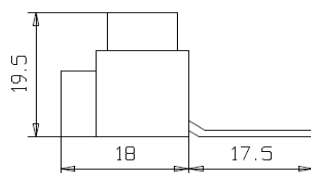


Zubehör

Accessories

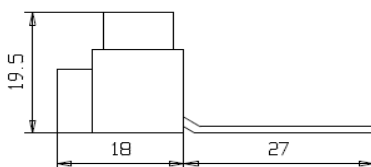
Accessoires

Einspeiseklemmen für Phasenschienen



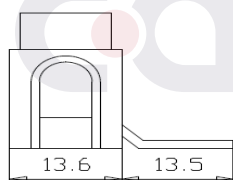
Einspeiseklemme 25mm², Stift

| Artikel-Nr. Art.-no N° article | Farbe Colour Couleur | GTIN-Code 4046931... | (Anschluss) Querschnitt (Connecting)Cross section Coupe transversale | Phasen Phase Phase | VPE Pack. Emballage | Cu/CuZn Zahl Cu/CuZn Code Cu/CuZn Codé |
|--------------------------------------|----------------------------|-------------------------|--|--------------------------|---------------------------|--|
| | | [GTIN-13] | [Cu / mm²] | [1...4] | [Unit] | [kg] |
| 60.004.100 | ■ | 220762 | 25 | 1 | 10 | 0,017 |



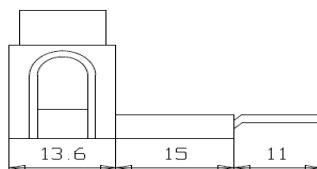
Einspeiseklemme 25mm², Stift

| Artikel-Nr. Art.-no N° article | Farbe Colour Couleur | GTIN-Code 4046931... | (Anschluss) Querschnitt (Connecting)Cross section Coupe transversale | Phasen Phase Phase | VPE Pack. Emballage | Cu/CuZn Zahl Cu/CuZn Code Cu/CuZn Codé |
|--------------------------------------|----------------------------|-------------------------|--|--------------------------|---------------------------|--|
| | | [GTIN-13] | [Cu / mm²] | [1...4] | [Unit] | [kg] |
| 60.003.100 | ■ | 220779 | 25 | 1 | 10 | 0,019 |



Einspeiseklemme 25mm², Stift, kurz

| Artikel-Nr. Art.-no N° article | Farbe Colour Couleur | GTIN-Code 4046931... | (Anschluss) Querschnitt (Connecting)Cross section Coupe transversale | Phasen Phase Phase | VPE Pack. Emballage | Cu/CuZn Zahl Cu/CuZn Code Cu/CuZn Codé |
|--------------------------------------|----------------------------|-------------------------|--|--------------------------|---------------------------|--|
| | | [GTIN-13] | [Cu / mm²] | [1...4] | [Unit] | [kg] |
| EK60.015.100 | ■ | 220786 | 25 | 1 | 10 | 0,023 |



Einspeiseklemme 25mm², Stift, lang

| Artikel-Nr. Art.-no N° article | Farbe Colour Couleur | GTIN-Code 4046931... | (Anschluss) Querschnitt (Connecting)Cross section Coupe transversale | Phasen Phase Phase | VPE Pack. Emballage | Cu/CuZn Zahl Cu/CuZn Code Cu/CuZn Codé |
|--------------------------------------|----------------------------|-------------------------|--|--------------------------|---------------------------|--|
| | | [GTIN-13] | [Cu / mm²] | [1...4] | [Unit] | [kg] |
| EK60.014.100 | ■ | 220793 | 25 | 1 | 10 | 0,030 |

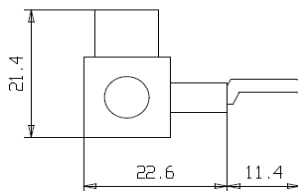


Zubehör

Accessories

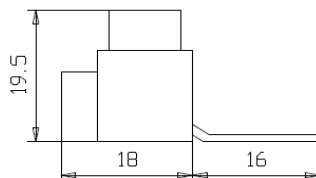
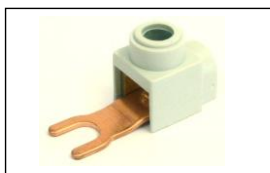
Accessoires

Einspeiseklemmen für Phasenschienen



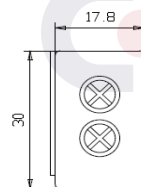
Einspeiseklemme 25mm², Stift

| Artikel-Nr. Art.-no N° article | Farbe Colour Couleur | GTIN-Code 4046931... | (Anschluss) Querschnitt (Connecting)Cross section Coupe transversale | Phasen Phase Phase | VPE Pack. Emballage | Cu/CuZn Zahl Cu/CuZn Code Cu/CuZn Codé |
|--------------------------------------|----------------------------|-------------------------|--|--------------------------|---------------------------|--|
| | | [GTIN-13] | [Cu / mm²] | [1...4] | [Unit] | [kg] |
| 60.008.100 | ■ | 220809 | 25 | 1 | 10 | 0,010 |



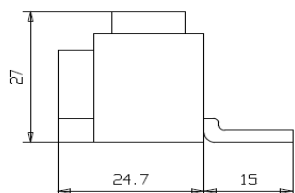
Einspeiseklemme 25mm², Gabel

| Artikel-Nr. Art.-no N° article | Farbe Colour Couleur | GTIN-Code 4046931... | (Anschluss) Querschnitt (Connecting)Cross section Coupe transversale | Phasen Phase Phase | VPE Pack. Emballage | Cu/CuZn Zahl Cu/CuZn Code Cu/CuZn Codé |
|--------------------------------------|----------------------------|-------------------------|--|--------------------------|---------------------------|--|
| | | [GTIN-13] | [Cu / mm²] | [1...4] | [Unit] | [kg] |
| 50.002.100 | ■ | 220816 | 25 | 1 | 10 | 0,016 |



Einspeiseklemme 35mm², Stift und Gabel, anreihbar

| Artikel-Nr. Art.-no N° article | Farbe Colour Couleur | GTIN-Code 4046931... | (Anschluss) Querschnitt (Connecting)Cross section Coupe transversale | Phasen Phase Phase | VPE Pack. Emballage | Cu/CuZn Zahl Cu/CuZn Code Cu/CuZn Codé |
|--------------------------------------|----------------------------|-------------------------|--|--------------------------|---------------------------|--|
| | | [GTIN-13] | [Cu / mm²] | [1...4] | [Unit] | [kg] |
| 50.006.100 | ■ | 220823 | 35 | 1 - 4 | 10 | 0,020 |



Einspeiseklemme 50mm², Gabel

| Artikel-Nr. Art.-no N° article | Farbe Colour Couleur | GTIN-Code 4046931... | (Anschluss) Querschnitt (Connecting)Cross section Coupe transversale | Phasen Phase Phase | VPE Pack. Emballage | Cu/CuZn Zahl Cu/CuZn Code Cu/CuZn Codé |
|--------------------------------------|----------------------------|-------------------------|--|--------------------------|---------------------------|--|
| | | [GTIN-13] | [Cu / mm²] | [1...4] | [Unit] | [kg] |
| 50.011-V15.100 | ■ | 220885 | 50 | 1 | 3 | 0,022 |